



Revitalize the Rio

Community Report

Appendix 2

Appendix 2. Indicator Data

HEALTH AND WELLNESS

Figure 4. Adult obesity in Alamosa, Colorado, and the United States⁷

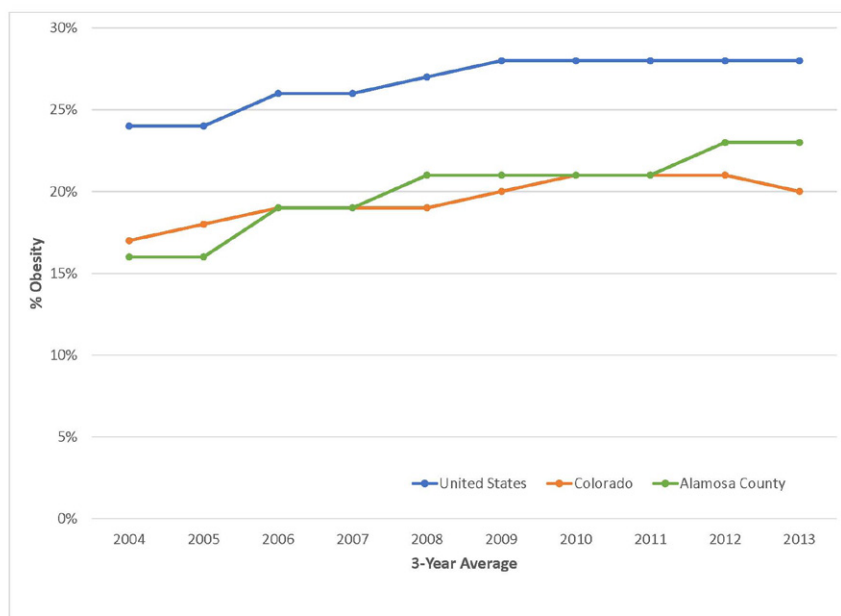


Table 6. Health outcomes for Alamosa County⁸

Quality of Life	Alamosa County	Error Margin	Top U.S. Performers	Colorado
Poor or Fair Health	20%	19-20%	12%	14%
Poor Physical Health Days	4.3	4.1-4.4	3.0	3.5
Frequent Physical Distress	14%	13-14%	9%	10%
Poor Mental Health Days	3.9	3.8-4.1	3.0	3.5
Frequent Mental Distress	13%	12-13%	9%	10%

Poor or fair health: % of adults reporting poor or fair health

Poor physical health days: average number of physically unhealthy days reported in past 30 days (age-adjusted)

Frequent physical distress: % of adults reporting 14 or more days of poor physical health per month

Poor mental health days: average number of mentally unhealthy days reported in past 30 days (age-adjusted)

Frequent mental distress: % of adults reporting 14 or more days of poor mental health per month

⁷ Data are from the 2017 County Health Rankings and Roadmaps. <http://www.countyhealthrankings.org/app/colorado/2017/rankings/alamosa/county/outcomes/overall/snapshot>.

⁸ Data are from the 2017 County Health Rankings and Roadmaps. <http://www.countyhealthrankings.org/app/colorado/2017/rankings/alamosa/county/outcomes/overall/snapshot>.

Figure 5. Health care providers in Alamosa County⁹

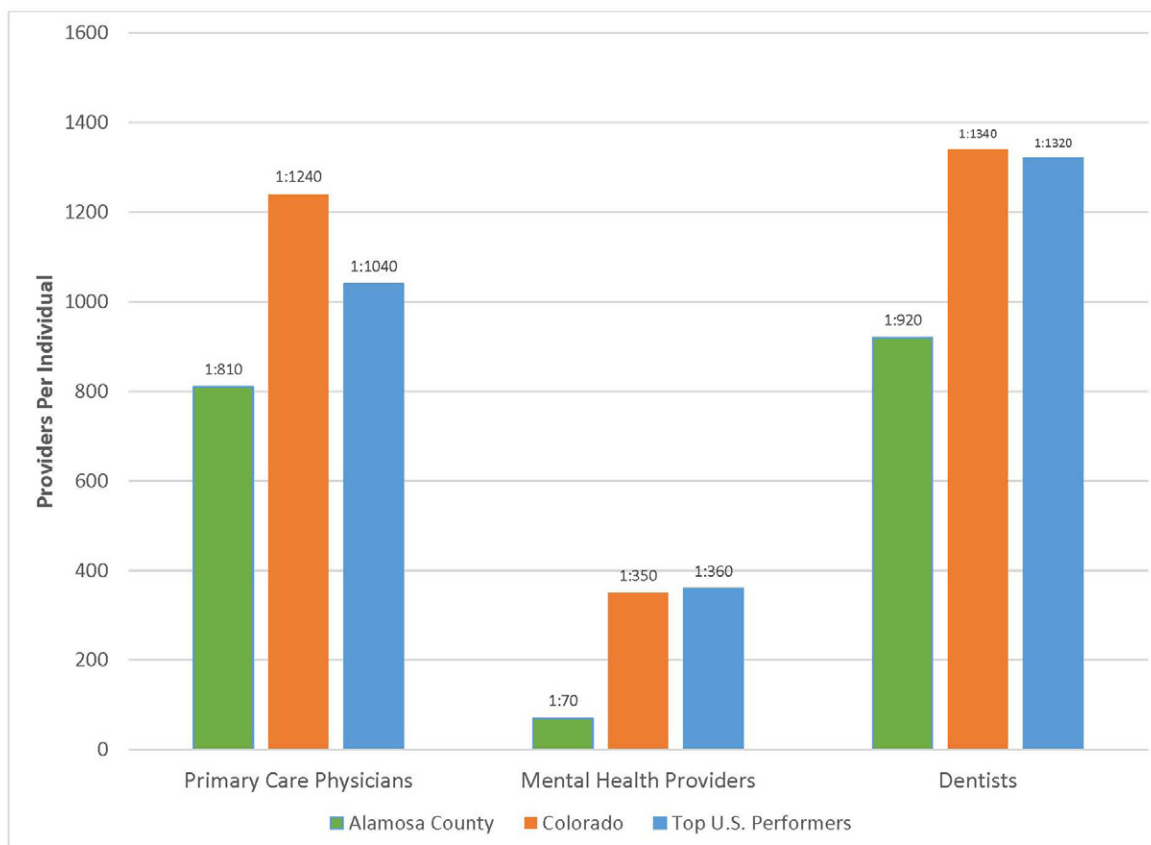
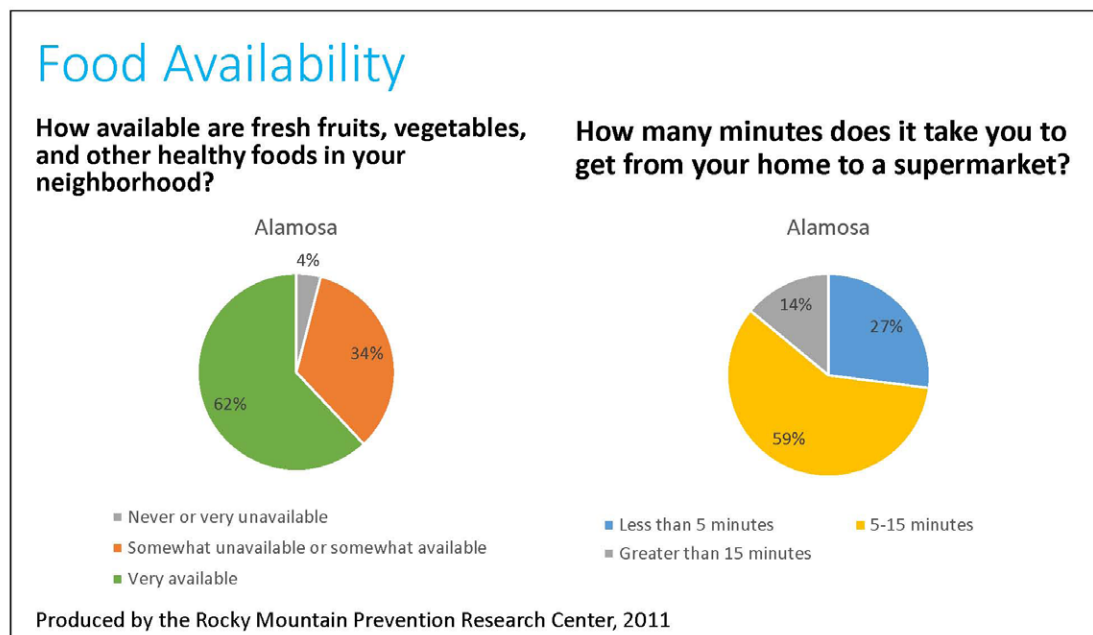


Figure 6. Food availability in Alamosa¹⁰



⁹ Data are from the 2017 County Health Rankings and Roadmaps. <http://www.countyhealthrankings.org/app/colorado/2017/rankings/alamosa/county/outcomes/overall/snapshot>.

¹⁰ Data are from Rocky Mountain Prevention Research Center, 2011.

11



¹¹ Map created by Rio Grande Farm Park using Google Maps.

Figure 8. Neighborhood parks and trails for walking, running, and biking in the six San Luis Valley counties¹²

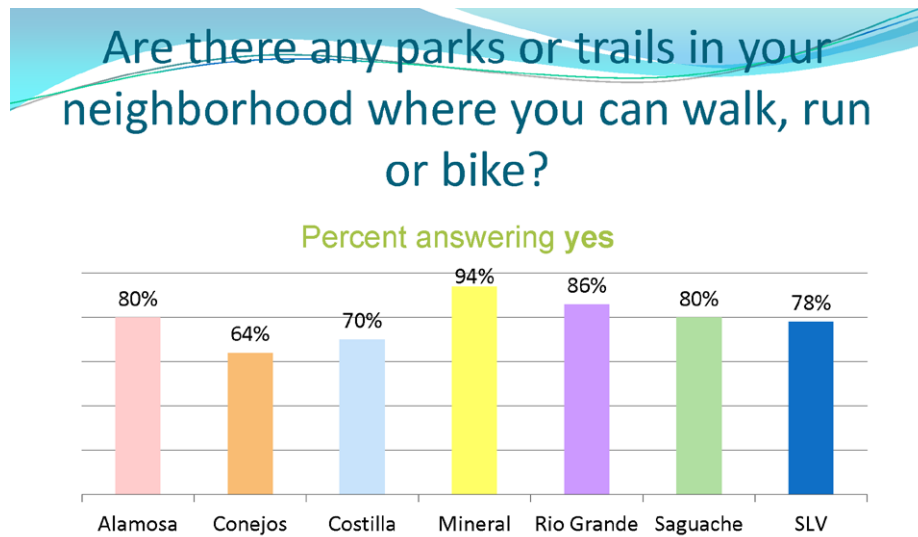
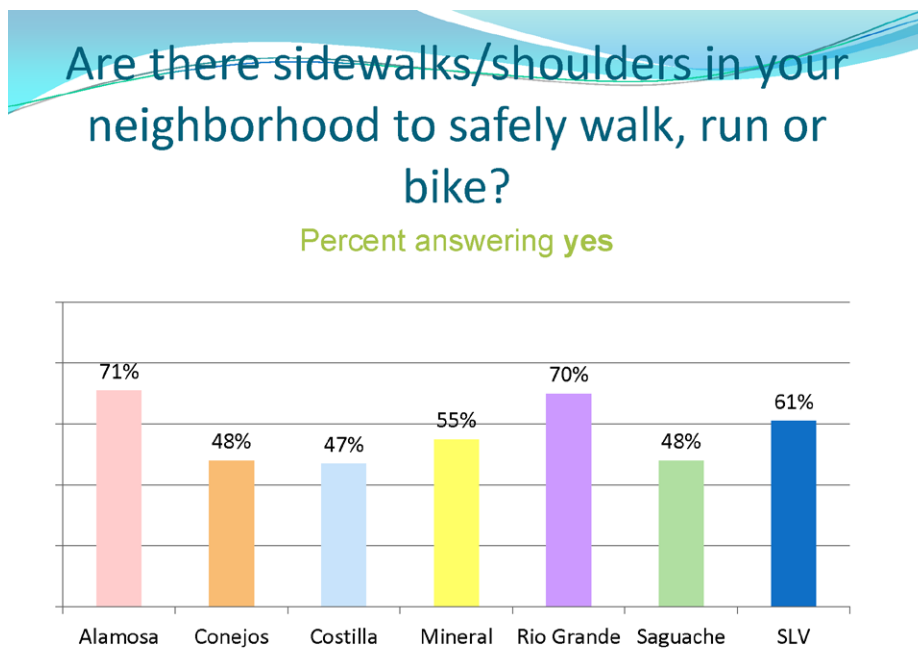


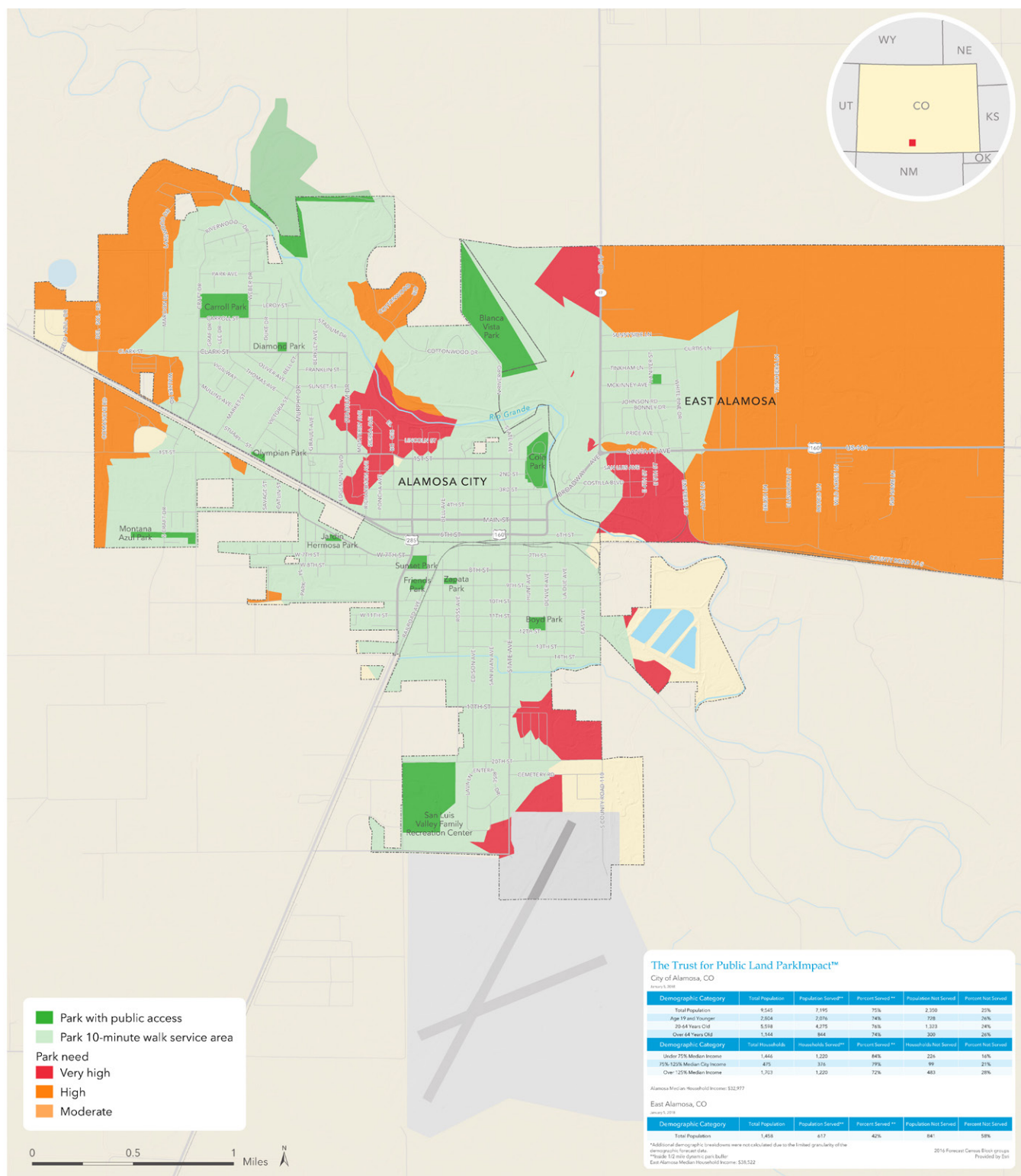
Figure 9. Neighborhood sidewalks and shoulders for safe walking, running, and biking in the six San Luis Valley counties¹³



¹² Data are from the Rocky Mountain Prevention Research Center, 2011.

¹³ Data are from the Rocky Mountain Prevention Research Center, 2011.

Figure 10. Population within a 10-minute walk of a park in Alamosa and East Alamosa¹⁴



Park need

PARKSERVE® 10-MINUTE WALK ANALYSIS: ALAMOSA AND EAST ALAMOSA, COLORADO

January 8, 2018. Copyright © The Trust for Public Land. The Trust for Public Land and The Trust for Public Land logo are federally registered marks of The Trust for Public Land. Information on this map is provided for purposes of discussion and visualization only. www.tpl.org



¹⁴ Map was provided by The Trust for Public Land.

Tables 7a and 7b. Demographics of Alamosa residents who do and do not live within a 10-minute walk of a park

The Trust for Public Land ParkImpact™

City of Alamosa, CO

January 5, 2018



Demographic Category	Total Population	Population Served**	Percent Served **	Population Not Served	Percent Not Served
Total Population	9,545	7,195	75%	2,350	25%
Age 19 and Younger	2,804	2,076	74%	728	26%
20-64 Years Old	5,598	4,275	76%	1,323	24%
Over 64 Years Old	1,144	844	74%	300	26%
Demographic Category	Total Households	Households Served**	Percent Served **	Households Not Served	Percent Not Served
Under 75% Median Income	1,446	1,220	84%	226	16%
75%-125% Median City Income	475	376	79%	99	21%
Over 125% Median Income	1,703	1,220	72%	483	28%

**Inside 1/2 mile dynamic park buffer
Alamosa Median Household Income: \$32,977

2016 Forecast Census Block groups
Provided by Esri

The Trust for Public Land ParkImpact™

City of Alamosa, CO

January 5, 2018



Demographic Category	Total Population	Population Served **	Percent Served **	Population Not Served	Percent Not Served
Total Population	9,545	7,195	75%	2,350	25%
White	6,567	4,883	74%	1,684	26%
Black	177	137	77%	40	23%
American Indian/Alaska Native	360	273	76%	87	24%
Asian	143	109	76%	34	24%
Pacific Islands	16	11	69%	5	31%
Other Race	1,799	1,394	77%	405	23%
Two or More Races	484	388	80%	96	20%
Hispanic Origin*	4,956	3,785	76%	1,171	24%

*U.S. Census captures Hispanic Origin separate from race

** Inside 1/2 mile dynamic park buffer

2016 Forecast Census Block groups
Provided by Esri

ECONOMY

Figure 11. Colorado and Alamosa County annual rate of population growth¹⁵

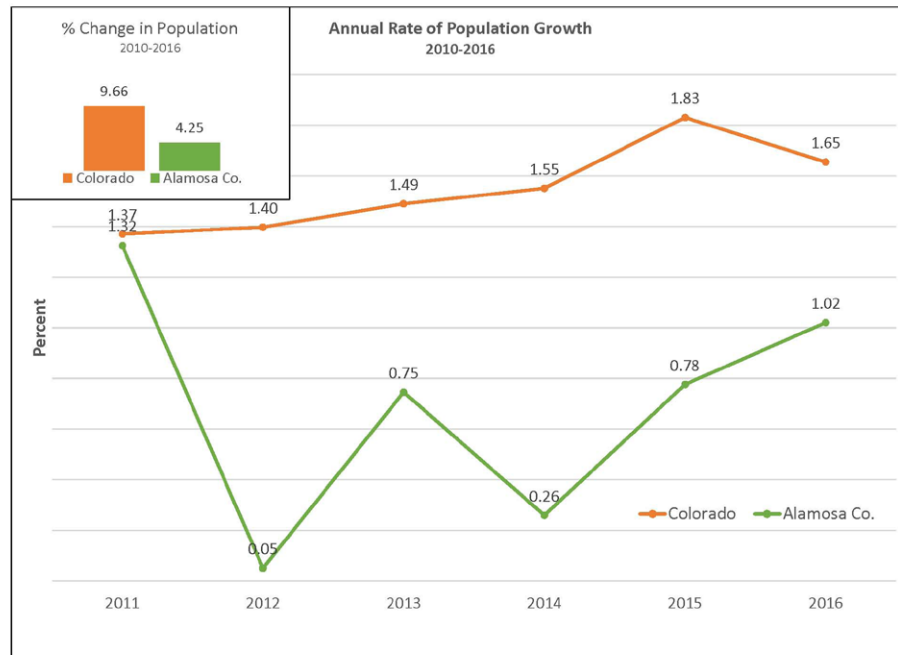
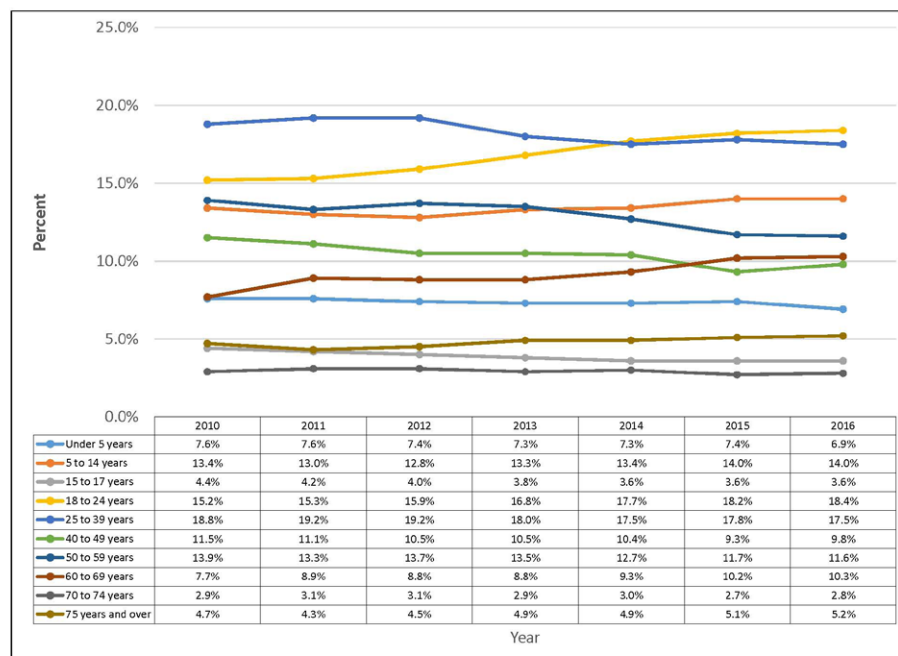


Figure 12. Alamosa County population by age group, 2010–2016¹⁶



¹⁵ Data were provided by the Colorado State Demography Office.

¹⁶ Data were provided by the American Community Survey.

Figure 13. Alamosa County unemployment statistics, 2010–2017¹⁷

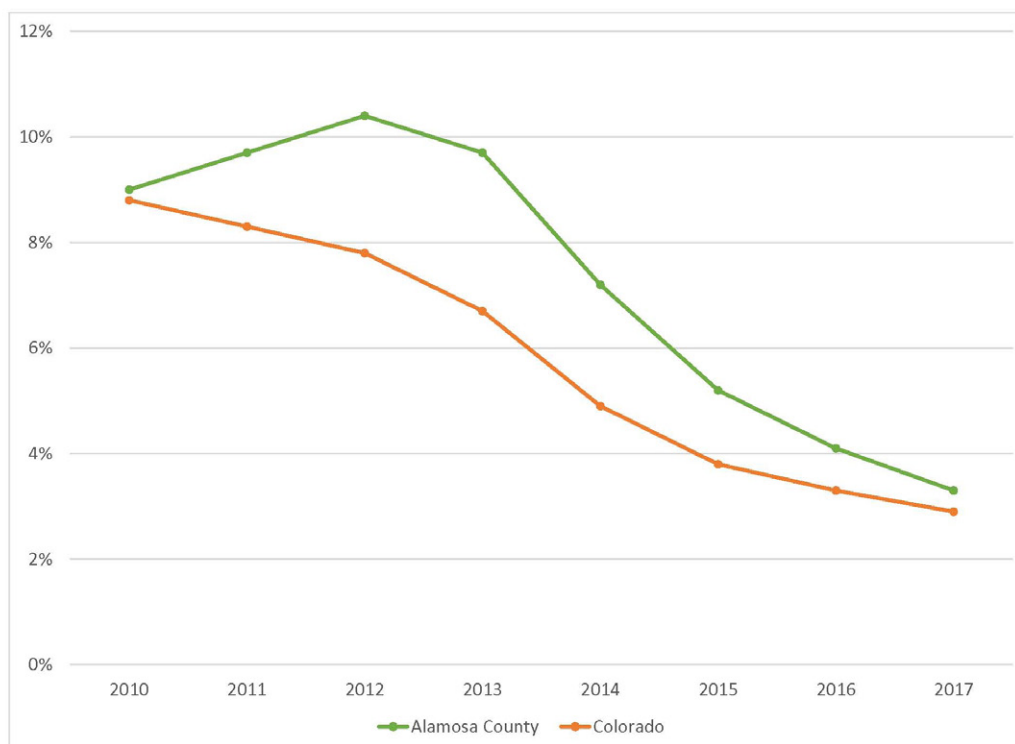
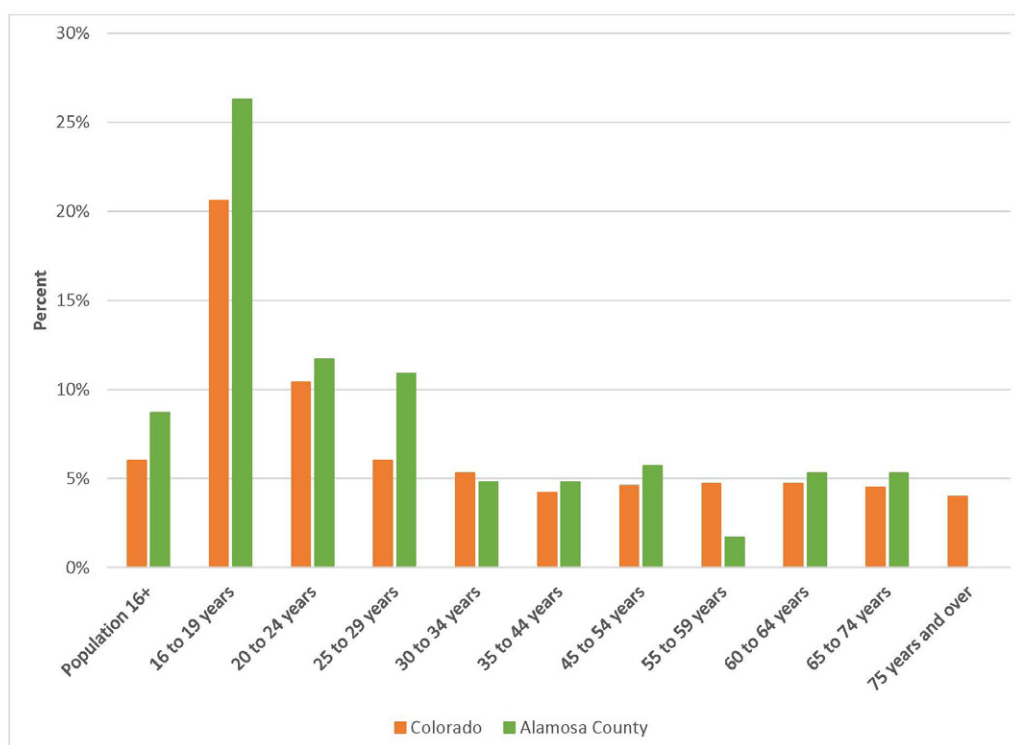


Figure 14. Employment status by age in Alamosa County and Colorado

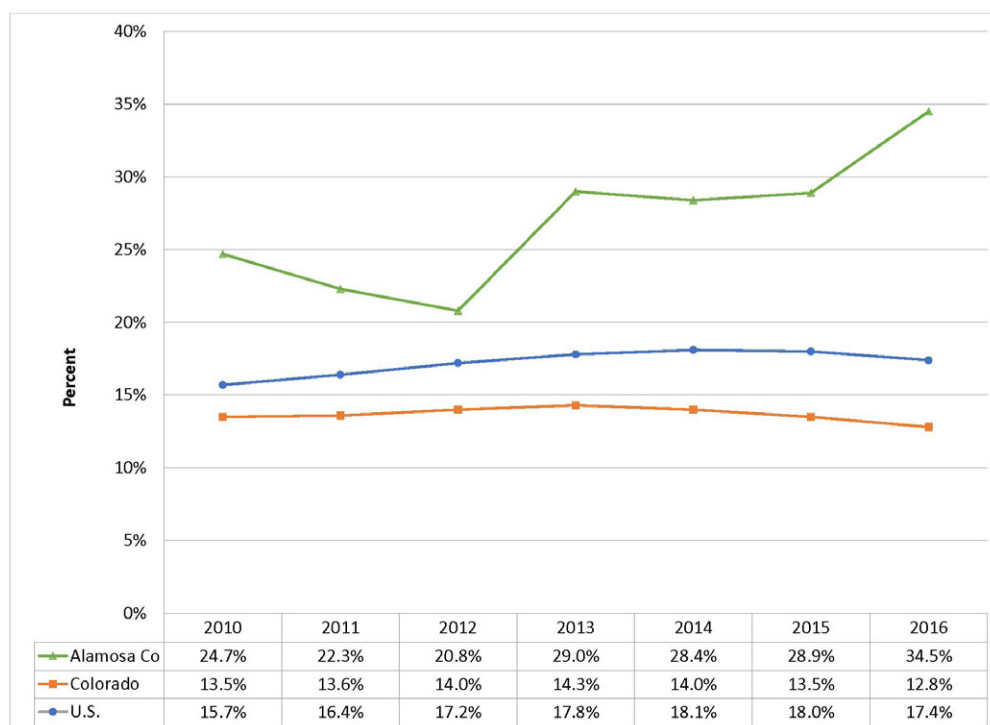


¹⁷ Data were provided by the Bureau of Labor Statistics, Local Area Unemployment Statistics program. <https://www.bls.gov/lau/>.

Figure 15. Median household income in Alamosa County, Colorado, and the United States, 2010–2016¹⁸



Figure 16. Families with children under 18 whose income in the past 12 months is below the poverty level in Alamosa County, 2010–2016¹⁹



¹⁸ Data were provided by the American Community Survey.

¹⁹ Data were provided by the American Community Survey.

Table 8. Housing characteristics in Alamosa County²⁰

Subject	Alamosa County	
	Estimate	Percent
HOUSING OCCUPANCY		
Total housing units	6,728	6,728
Occupied housing units	5,946	88.4%
Vacant housing units	782	11.6%
HOUSING TENURE		
Occupied housing units	5,946	5,946
Owner-occupied	3,384	56.9%
Renter-occupied	2,562	43.1%
VEHICLES AVAILABLE		
No vehicles available	561	9.4%
1 vehicle available	1,925	32.4%
2 vehicles available	2,200	37.0%
3 or more vehicles available	1,260	21.2%
MORTGAGE STATUS		
Owner-occupied units	3,384	3,384
Housing units with a mortgage	1,951	57.7%
Housing units without a mortgage	1,433	42.3%
SELECTED MONTHLY OWNER COSTS AS A PERCENTAGE OF HOUSEHOLD INCOME (SMOCAPI)		
Housing units with a mortgage (excluding units where SMOCAPI cannot be computed)	1,934	1,934
Less than 20.0 percent	723	37.4%
20.0 to 24.9 percent	316	16.3%
25.0 to 29.9 percent	262	13.5%
30.0 to 34.9 percent	162	8.4%
35.0 percent or more	471	24.4%
Not computed	17	(X)
Housing unit without a mortgage (excluding units where SMOCAPI cannot be computed)	1,428	1,428
Less than 10.0 percent	688	48.2%
10.0 to 14.9 percent	332	23.2%
15.0 to 19.9 percent	128	9.0%
20.0 to 24.9 percent	99	6.9%
25.0 to 29.9 percent	35	2.5%
30.0 to 34.9 percent	0	0.0%
35.0 percent or more	146	10.2%
Not computed	5	(X)
GROSS RENT		
Occupied units paying rent	2,447	2,447
Less than \$500	785	32.1%
\$500 to \$999	1,393	56.9%
\$1,000 to \$1,499	221	9.0%
\$1,500 to \$1,999	48	2.0%
\$2,000 to \$2,499	0	0.0%
\$2,500 to \$2,999	0	0.0%
\$3,000 or more	0	0.0%
Median (dollars)	634	(X)
GROSS RENT AS A PERCENTAGE OF HOUSEHOLD INCOME (GRAPI)		
Occupied units paying rent (excluding units where GRAPI cannot be computed)	2,304	2,304
Less than 15.0 percent	409	17.8%
15.0 to 19.9 percent	177	7.7%
20.0 to 24.9 percent	179	7.8%
25.0 to 29.9 percent	225	9.8%
30.0 to 34.9 percent	314	13.6%
35.0 percent or more	1,000	43.4%

²⁰ Data were from the 2016 American Community Survey, 5-year survey.

RIVER STEWARDSHIP AND OUTDOOR RECREATION

Table 9. Water quality data for the Rio Grande²¹

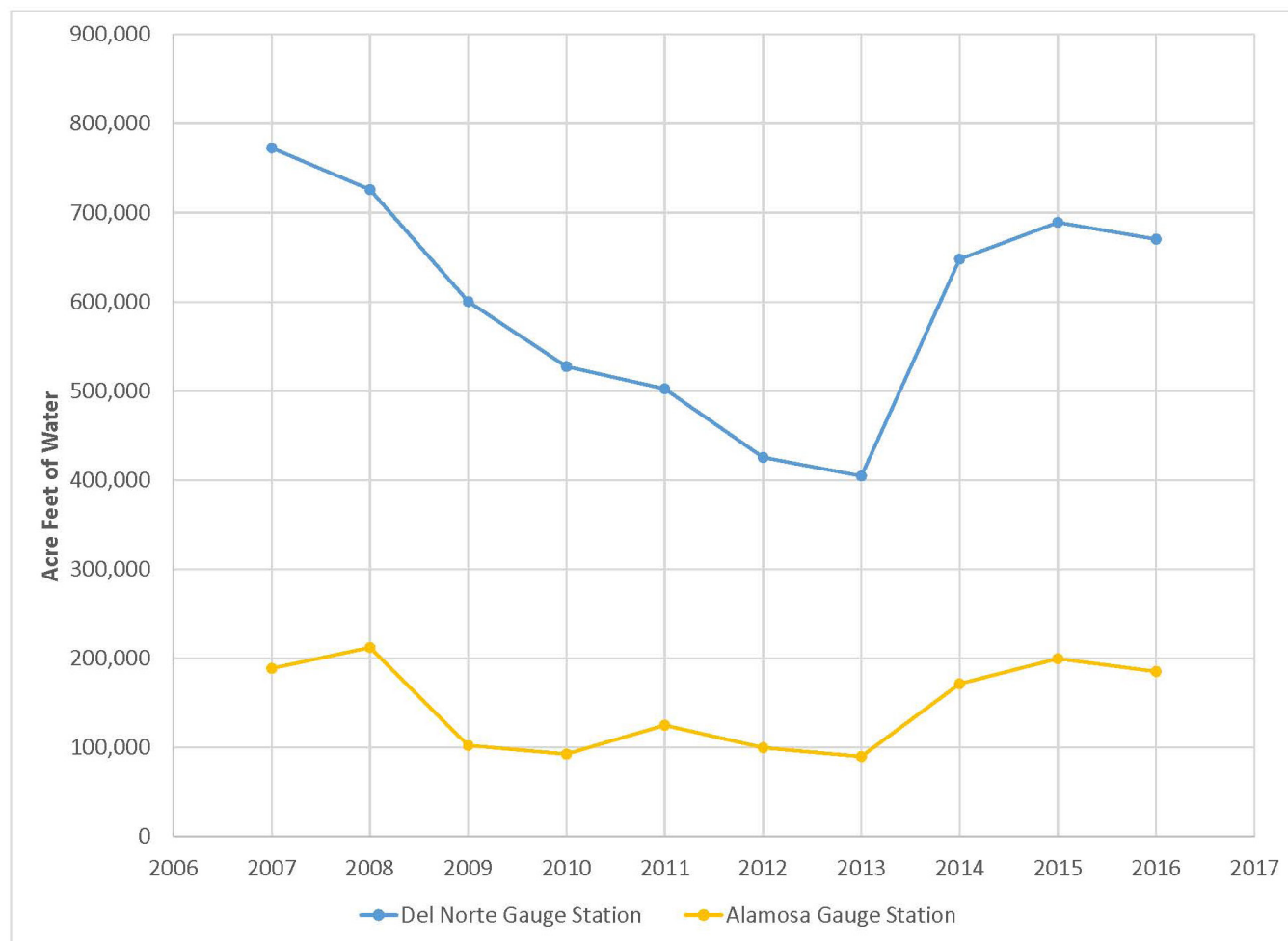
Parameter	Measure- ment	Healthy River Standard	Units	Data Source	Standard Source	Observation Date
Dissolved Oxygen	7.28	>5.0	mg/L	CDPHE	WQCC CDPHE	June 5, 2017
2-year average	7.99	>5.0	mg/L	CDPHE	WQCC CDPHE	2016 & 2017
pH	7.91	6.5-9.0	none	CDPHE	WQCC CDPHE	June 5, 2017
2-year average	7.8	6.5-9.0	none	CDPHE	WQCC CDPHE	2016 & 2017
Temperature	17.931	<24.2 weekly avg <29.0 max	°C	CDPHE	WQCC CDPHE	June 5, 2017
2-year average Mar-Nov	14.880	<24.2 weekly avg <29.0 max	°C	CDPHE	WQCC CDPHE	2016 & 2017
2-year average Dec-Feb	0.528	<12.1 weekly avg <14.5 max	°C	CDPHE	WQCC CDPHE	2016 & 2017
Conductance	68.8	150-500	μS/ cm	CDPHE	Testing the Waters: Chemical and Physical Vital Signs of a River	June 5, 2017
2-year average	148.7	150-500	μS/ cm	CDPHE	Testing the Waters: Chemical and Physical Vital Signs of a River	2016 & 2017
Phosphorus	0.082	<0.1	mg/L	CDPHE	WRC	April 10, 2017
2-year average	0.091	<0.1	mg/L	CDPHE	WRC	2016 & 2017
Nitrogen (organic +inorg.)	0.188	<3.411	mg/L	CDPHE	WQCC CDPHE	April 10, 2017
2-year average	0.249	<3.411	mg/L	CDPHE	WQCC CDPHE	2016 & 2017
Turbidity	Hwy 142 bridge: 9.2	<5 recreation	NTU	LRGA 2016	NCSU WQG	May 2014
	Road G bridge: 10.9	<25 aquatic life	NTU	LRGA 2016	NCSU WQG	May 2014
Cu	8.5	<5.21 chronic or <7.39 acute	μg/L	CDPHE	WQCC CDPHE	April 29, 2015

*All data in this table, except for turbidity, were collected at the State Avenue bridge in Alamosa.

*Data on E. coli levels and noxious weeds are not available. Data are not available for Alamosa Rio Grande corridor, but noxious weed data will be collected by Alamosa Parks and Recreation during the summer of 2018.

²¹ Data were compiled by Peter Wise for the Rio Grande Headwaters Restoration Project.

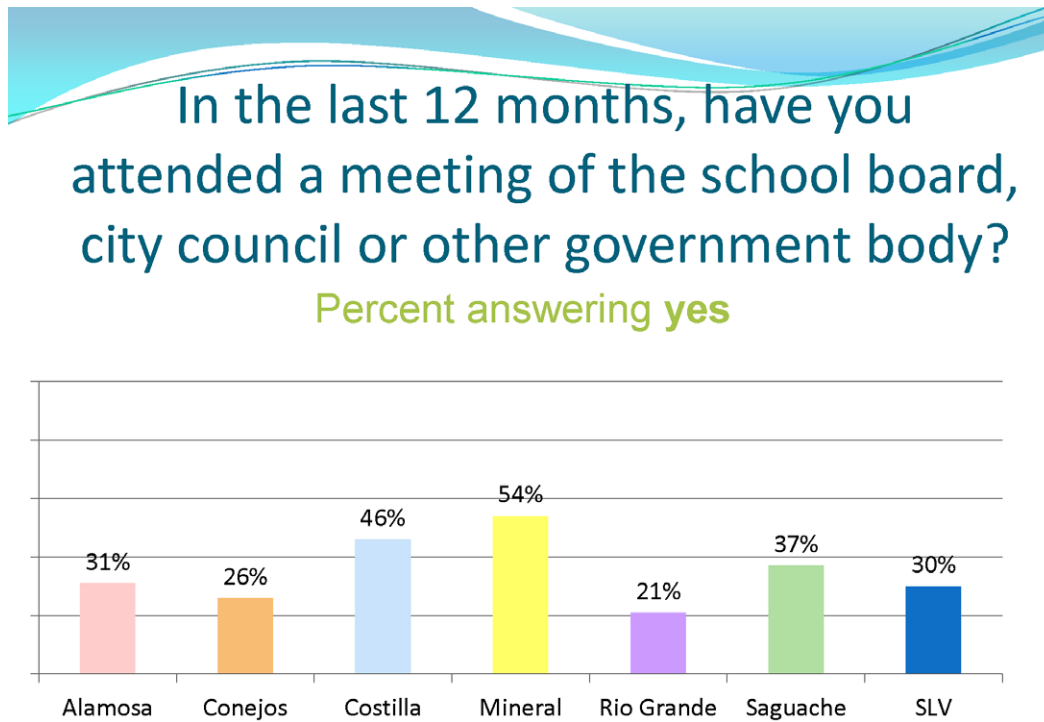
Figure 17. Rio Grande water quantity²²



²² Date measured at the Del Norte and Alamosa gauge stations managed by Colorado's Division of Water Resources, <http://www.dwr.state.co.us/SurfaceWater/default.aspx>.

CIVIC HEALTH AND CULTURAL VITALITY

Figure 18. Civic participation across the six San Luis Valley counties²³



²³ Data collected by the Rocky Mountain Prevention Research Center in 2011.

Figure 19. Community pride in Alamosa²⁴

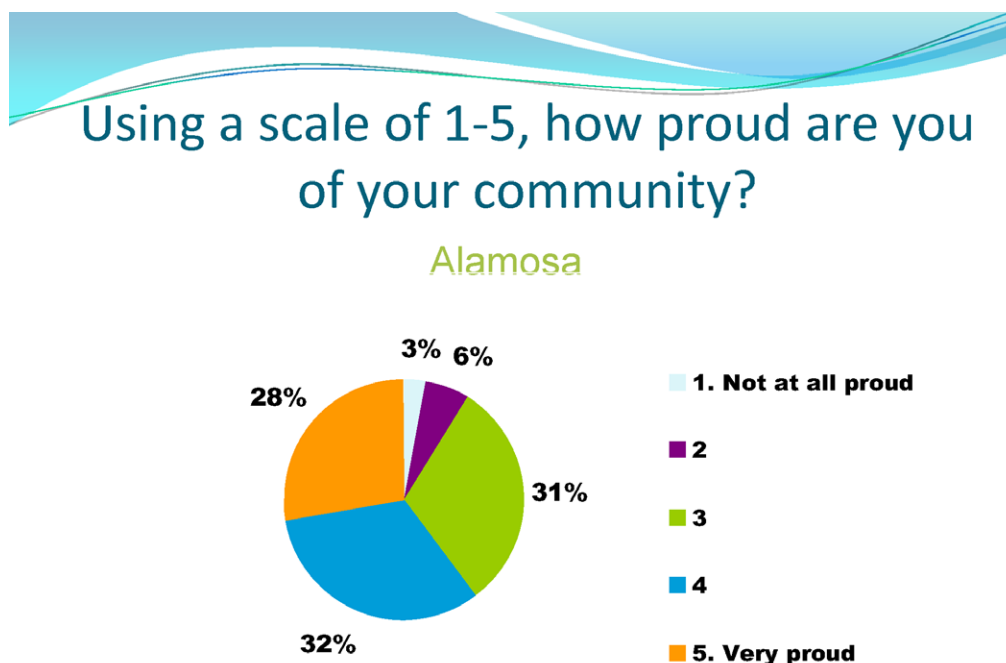


Figure 20. Volunteer participation across the six San Luis Valley counties²⁵



²⁴ Ibid.

²⁵ Ibid.



Peppers at the Rio Grande Farm Park, photo courtesy Theo Stroomer for The Trust for Public Land
Cover: Meander in the Rio Grande, photo by Jason Corzine



City of Alamosa
2222 Old Sanford Road
Alamosa, CO 81101
719-589-2105
alamosarec.org



San Luis Valley Great Outdoors
610 State Street
Alamosa, CO 81101
719-589-6099
slvgo.com



The Trust for Public Land
1410 Grant St # D210
Denver, CO 80203
303-837-1414
tpl.org



The Civic Canopy
3532 Franklin St, Suite H
Denver, CO 80305
303-293-3144
civiccanopy.org



Rio Grande Farm Park
412 State Street
Alamosa, CO 81101
719-580-0379
riograndefarmpark.org